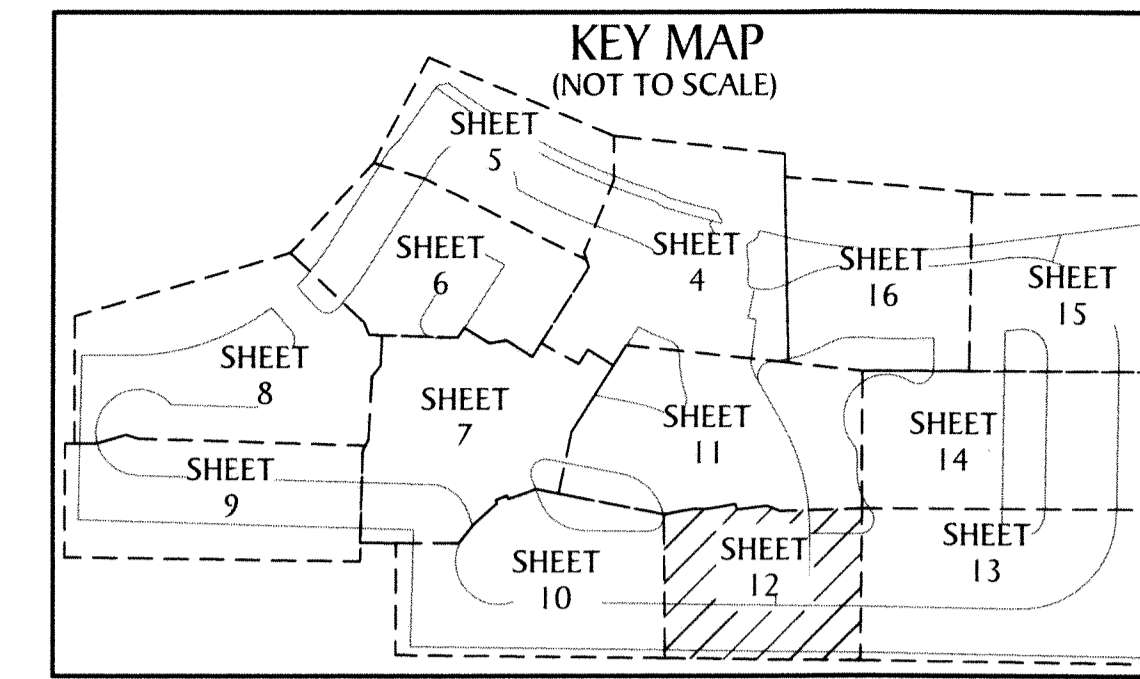
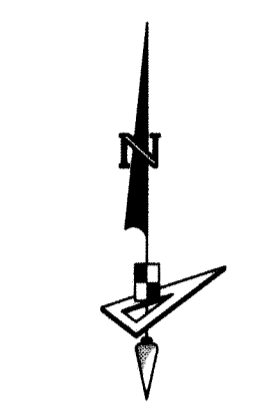


# GROVES OF WESTLAKE - PHASE I

BEING IN PART A REPLAT OF OPEN SPACE TRACT #4 AND OPEN SPACE TRACT #5, PERSIMMON BOULEVARD EAST - PLAT 2, PLAT BOOK 128, PAGES 16 THROUGH 19, INCLUSIVE, PUBLIC RECORDS OF PALM BEACH COUNTY, FLORIDA, AND BEING A PORTION OF SECTION 7, TOWNSHIP 43 SOUTH, RANGE 41 EAST AND SECTION 12, TOWNSHIP 43 SOUTH, RANGE 40 EAST, CITY OF WESTLAKE, PALM BEACH COUNTY, FLORIDA,

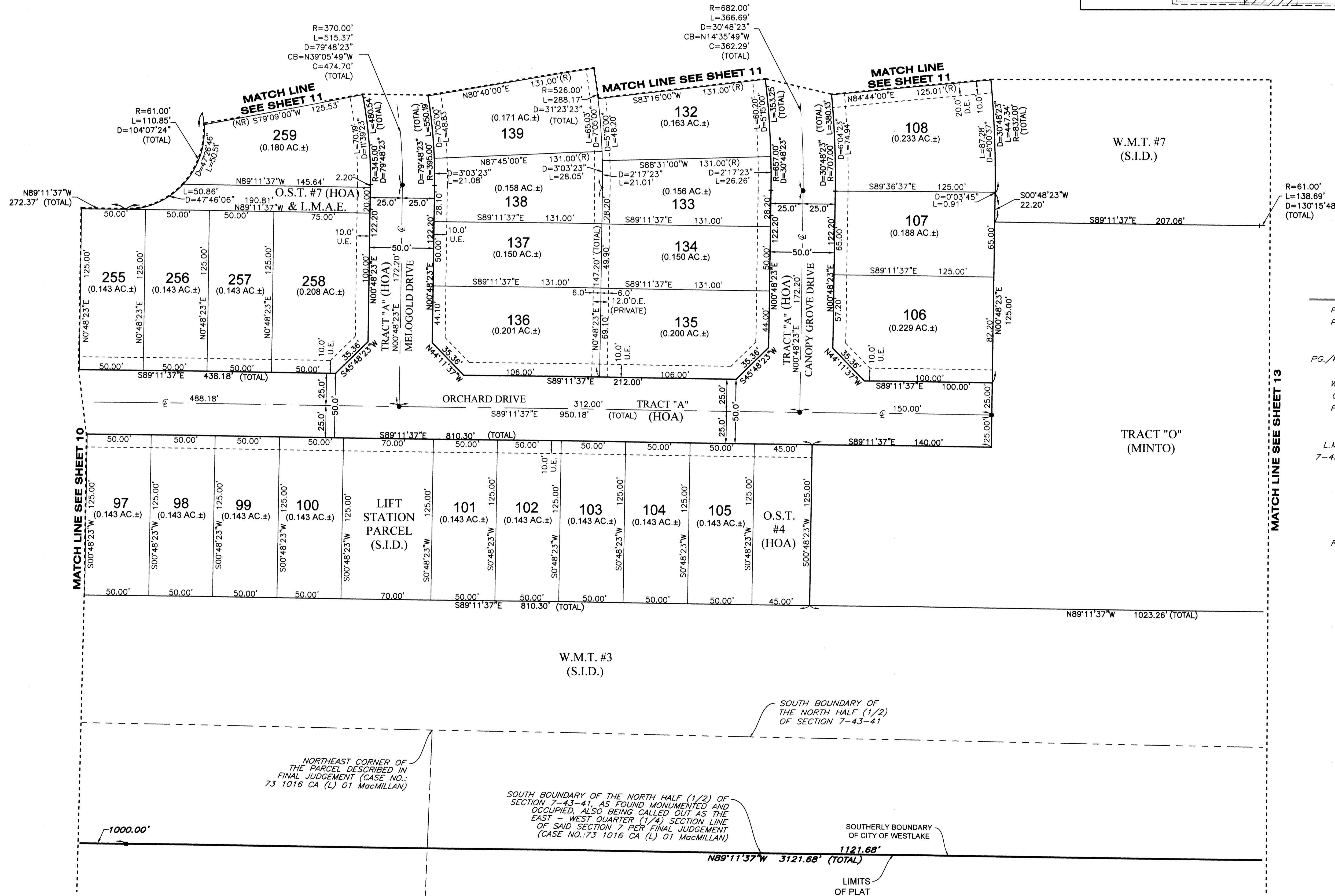


131



SCALE 1" = 40'

SEE NOTE ON SHEET 2 FOR BASIS OF BEARINGS



- LEGEND**
- P.O.B. ----- POINT OF BEGINNING
  - P.O.C. ----- POINT OF COMMENCEMENT
  - P.B. ----- PLAT BOOK
  - D.B. ----- DEED BOOK
  - PG./PG(S) ----- PAGE(S)
  - NAD ----- NORTH AMERICAN DATUM
  - W.M.T. ----- WATER MANAGEMENT TRACT
  - O.S.T. ----- OPEN SPACE TRACT
  - P.B.C. ----- PALM BEACH COUNTY
  - U.E. ----- UTILITY EASEMENT
  - D.E. ----- DRAINAGE EASEMENT
  - L.M.A.E. ----- LAKE MAINTENANCE ACCESS EASEMENT
  - 7-43-41 ----- SECTION-TOWNSHIP-RANGE
  - R ----- RADIUS
  - L ----- ARC LENGTH
  - D ----- DELTA ANGLE
  - CB ----- CHORD BEARING
  - C ----- CHORD
  - R/W ----- RIGHT-OF-WAY
  - R.P.E. ----- RURAL PARKWAY EASEMENT
  - (R) ----- RADIAL
  - (NR) ----- NON-RADIAL
  - HOA ----- HOMEOWNERS ASSOCIATION
  - S.I.D. ----- SEMINOLE IMPROVEMENT DISTRICT
  - PRM ----- PERMANENT REFERENCE MONUMENT
  - ----- PERMANENT CONTROL POINT
  - ----- FOUND PERMANENT REFERENCE MONUMENT
  - ----- SET 4"x4" CONCRETE MONUMENT WITH 2" ALUMINUM DISK STAMPED "PRM LB 7768"

NORTHEAST CORNER OF THE PARCEL DESCRIBED IN FINAL JUDGEMENT (CASE NO.: 73 1016 CA (L) 01 MacMILLAN)

SOUTH BOUNDARY OF THE NORTH HALF (1/2) OF SECTION 7-43-41, AS FOUND MONUMENTED AND OCCUPIED, ALSO BEING CALLED OUT AS THE EAST - WEST QUARTER (1/4) SECTION LINE OF SAID SECTION 7 PER FINAL JUDGEMENT (CASE NO.: 73 1016 CA (L) 01 MacMILLAN)

SOUTH BOUNDARY OF THE NORTH HALF (1/2) OF SECTION 7-43-41

SOUTHERLY BOUNDARY OF CITY OF WESTLAKE

LIMITS OF PLAT



4152 W. Blue Heron Blvd. Phone: (561) 444-2720  
 Suite 105 www.geopointsurveying.com  
 Riviera Beach, FL 33404 Licensed Business Number LB 7768